

Ewhurst Park

WEDDINGS



RECONNECTING WITH THE LAND,
NATURE AND OURSELVES



WELCOME TO EWHURST PARK

Set within **925 acres of Hampshire countryside**, Ewhurst Park is a place where land, legacy and love intertwine.

With roots stretching back to the Domesday Book and centuries shaped by Dukes and earls, the estate carries a quiet sense of history in every meadow and woodland path.

Today, Ewhurst is being thoughtfully restored — a living landscape dedicated to biodiversity, regenerative farming and reconnecting people with nature. It is both timeless and evolving — a place to gather, to celebrate, and to begin something new.



OUR COMMITMENT TO NATURE

Every choice we make considers our impact – today and for generations to come – embracing better, more natural ways of living, celebrating, and being.

The land is being carefully restored for biodiversity, soil health and responsible farming, with a long-term commitment to working with nature rather than against it. Woodland is protected, habitats are re-established and the estate continues to evolve with sustainability at its core.

At Ewhurst, food is part of the story. Produce is grown within our market garden and orchard, honey gathered from estate hives, and ingredients sourced thoughtfully from trusted local partners.

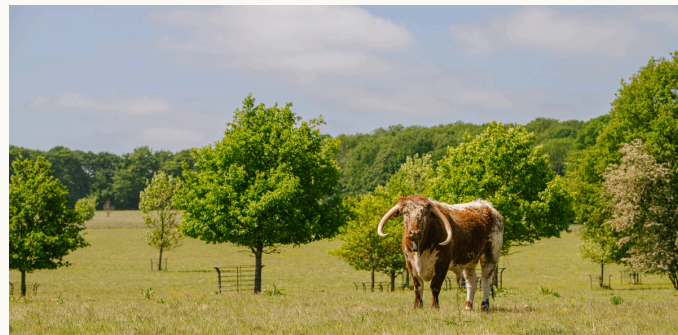
Our menus reflect the seasons and the landscape from which they come.

OUR ETHOS

EWHURST PARK IS A LIVING ESTATE
SHAPED BY A REGENERATIVE VISION.

OUR LIVING LEGACY

- Former arable land restored to species-rich meadows through conservation grazing with traditional English breeds
- We propagate trees across the estate to capture carbon and enhance the landscape.
- Our Certified Organic Market Garden grows seasonal produce and floristry using no-dig principles – with the soil at the heart of everything we do.
- Wood from our Ash tress powers our biomass system, reducing reliance on fossil fuels and keeping energy circular.
- Part of a nationwide beaver reintroduction program
- Winners of a Nature Recovery Award





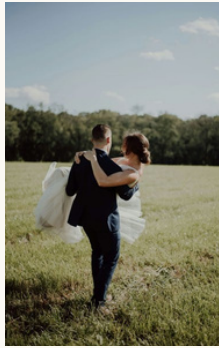
NUPTIALS IN NATURE

YOUR NATURAL WEDDING

Let the beauty of nature set the tone for your wedding day.

From relaxed outdoor gatherings and wild feasts beneath open skies, to refined celebrations overlooking sweeping parkland, Ewhurst offers a setting of rare breadth and quiet grandeur.

From the moment you arrive, there is space — to breathe, to gather, to celebrate. Rolling landscapes, ancient woodland and open lawns create a striking natural canvas, where every view feels expansive and every moment unhurried.





OUR CHAPEL

A SACRED SPACE

Built in 1864 as a private chapel for the estate, this intimate flint building remains a distinctive and historic feature of Ewhurst Park. With its original stone detailing and bell turret still in place, it carries a quiet sense of heritage and continuity.

Now deconsecrated and carefully restored, the chapel provides a beautifully atmospheric setting for blessings and personal ceremonies. Seating can be arranged for up to 50 guests, with floral styling thoughtfully curated to enhance the character of the space.

Licensed civil ceremonies are held in approved spaces across the estate, allowing couples to honour tradition in the chapel before continuing their celebration in the landscape beyond.



UNDER OPEN SKIES

FOR THE PART OF YOU
IN LOVE WITH NATURE

For those drawn to wide skies and open horizons, Ewhurst offers the freedom to celebrate entirely outdoors. Ceremonies unfold in woodland clearings or across sweeping lawns, with nature providing a breathtaking, ever-changing backdrop.

Receptions beneath canvas — from elegant tipis to bespoke tented structures — bring relaxed grandeur, where guests dine and gather immersed in the beauty of the estate.

Menus are shaped around your vision, from refined long-table feasts to seasonal dishes inspired by produce from our market garden.

Thoughtful styling, considered details and exceptional food ensure every celebration feels effortless, elevated and beautifully intentional.

Our cutting garden provides seasonal blooms grown here on the estate, thoughtfully incorporated into your day — from bouquets and buttonholes to aisle florals and ceremony arches — all created in collaboration with our Head Grower.



THE BOATHOUSE

SURROUNDED BY NATURAL BEAUTY

For smaller, more intimate celebrations, the Boathouse offers a secluded and atmospheric setting on the edge of the lake.

Tucked within woodland and open to the surrounding landscape, it feels quietly removed – a place where the focus remains entirely on those gathered.

Natural textures, soft furnishings and a central fire create warmth within, while doors open onto a lakeside terrace and private jetty, allowing the celebration to flow effortlessly between inside and out.

With its own kitchen and dining space, the Boathouse is perfectly suited to refined, relaxed gatherings – whether a rehearsal dinner, intimate wedding breakfast or a celebration shared with your closest family and friends.

EWHURST PARK



THE BOATHOUSE





STAYING AT EWHURST

THE ESTATE HOUSE

A PLACE TO ENTERTAIN,
AND HOST YOUR GUESTS

The Estate Manor offers a setting of understated luxury for elegant wedding receptions and private celebrations. Light-filled rooms overlook sweeping parkland, creating a sense of space and quiet exclusivity.

Beautifully restored throughout, the house feels refined yet welcoming – a place where guests can gather for drinks, dine in style and move effortlessly between intimate corners and larger reception spaces.

For those wishing to extend the celebration, the Manor is available for overnight stays, offering the couple and selected guests the comfort and privacy of the estate as their own.

From relaxed morning preparations to evening dining and late-night conversation, the house becomes yours – a luxurious home at the heart of your wedding.



THE EVENING

EXTEND THE CELEBRATION
AND MAKE THE ESTATE YOUR
HOME FOR THE WEEKEND

The principal Wedding Suite offers a light-filled and tranquil retreat, complete with en-suite bathroom and sweeping views across the grounds. Spacious and serene, it provides the perfect setting for morning preparations and a calm beginning to the day.

Additional bedrooms within the Manor are thoughtfully appointed, offering comfortable double rooms, private bathrooms and spaces suitable for families.

Beyond the house, the Guest House and four charming estate cottages provide further accommodation for those closest to you, allowing friends and family to gather, relax and fully immerse themselves in the experience.

EWHURST PARK



THE ESTATE HOUSE





ALL THE CHAPTERS

STAY A LITTLE LONGER

As the celebration draws to a close and the estate settles once more, a new chapter begins — quieter, slower, entirely your own.

Stay a little longer. Mornings unfold unhurried — coffee overlooking the parkland, woodland walks, or simply time together without agenda.

Whether it's the first days of your mini-moon, honeymoon, a gathering with close family, or a return visit in years to come, Ewhurst invites you to linger.

Private dining can be arranged within the Manor or beside the lake at the Boathouse, where candlelight and still water create an atmosphere entirely your own. For deeper seclusion, our shepherd's huts offer warmth, privacy and far-reaching views.

Beyond the gates, Hampshire invites exploration — from the historic beauty of Highclere Castle to the literary charm of Jane Austen's House — before returning to the calm of Ewhurst.



From a campfire barbecue with drinks the night before, to canapés, elegant sit-down dinners, or outdoor wild feasts on Asado grills, we can tailor every detail to your day. Our outdoor tipi tents make alfresco dining unforgettable, while our sustainably managed grounds offer seasonal produce and natural birch syrup for a unique, local touch.

Bespoke picnic baskets of breads, cheeses, pastries, and sandwiches –paired with bio-wines, cocktails, or fresh juices—make for perfect light bites. And to end your stay, breakfast with farm-fresh eggs and estate-reared meats is the ultimate indulgence.

And no celebration would be complete without something to raise a glass to – including our own estate gin, distilled using botanicals foraged from the parkland.

FEASTS, FIZZ & FODDER

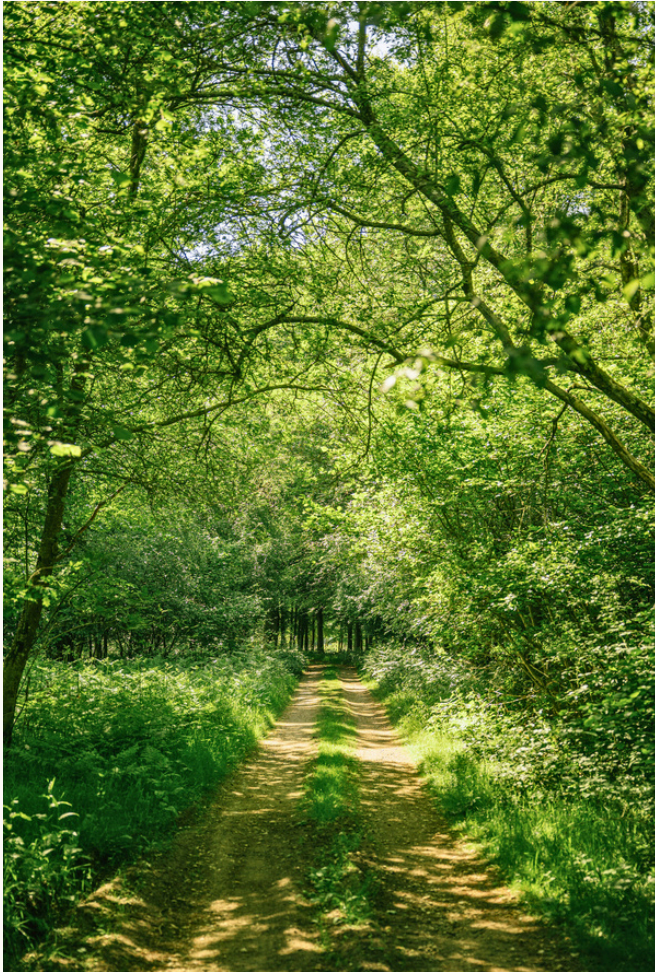
FLAVOURS OF THE LAND

Celebrate with your family and friends over food and drink rooted in the estate.

Our chefs create bespoke wedding menus shaped by the seasons and the landscape, drawing from our very own market garden and orchard provides us with our home-grown fruits and vegetables, and not to mention a whole estate of forage-able goodness. Produce grown and reared on the estate forms the foundation of each dish, complemented by ingredients sourced from trusted local suppliers who share our commitment to quality and sustainability.

From refined seated dinners to relaxed feasts prepared over flame, every menu reflects a sense of place – thoughtful, generous and deeply connected to the land.





BEYOND THE CELEBRATION

CURATED MOMENTS

The celebration need not begin and end with a single day.

We can curate experiences to enrich your time on the estate – from live musicians and refined roaming performers to discreet entertainment tailored to your gathering.

For those drawn outdoors, guests may enjoy guided foraging walks, conservation-led wildlife tours, floristry workshops, and woodland sessions for all, including younger visitors.

Culinary experiences range from private cooking classes and cocktail masterclasses to gin tastings aboard our gin bus – featuring our own Ewhurst Park gin – as well as relaxed wine pairings and informal evening feasts.

For quieter moments, yoga by the lake, forest bathing walks and restorative treatments offer space to pause and reset before or after your wedding day.

Should you wish to create something entirely bespoke, our team will be delighted to design it with you.

Ewhurst Park

TO ENQUIRE MORE ABOUT AVAILABILITY
AND PRICING, PLEASE EMAIL US AT
WEDDINGS@EWHURST-PARK.COM

OR

GIVE US A CALL: [01256643600](tel:01256643600)



EWHURST-PARK.COM
[INSTAGRAM @EWHURST_PARK](https://www.instagram.com/EWHURST_PARK)

